

The logo for ASD, featuring a red stylized 'A' symbol followed by the letters 'ASD' in white, set against a yellow background with a leather-like texture.

ASD

The main title 'ORGANICALLY COATED STEELS' is centered in the middle of the page. 'ORGANICALLY' is in white, and 'COATED STEELS' is in red. The background is a dark grey/black leather-like texture on the left and a blue leather-like texture on the right.

**ORGANICALLY
COATED STEELS**

The slogan 'Metal Solutions of Tomorrow' is located at the bottom of the page. The background is a green leather-like texture on the left and a light yellow leather-like texture on the right.

Metal Solutions of Tomorrow

ABOUT US

ASD is one of the leading metal stockholders and processing suppliers in the UK. We are renowned for supplying a diverse range of ferrous and non-ferrous products, sourced from reputable and accredited mill sources.



Organically and specialist coated steels are just some of the many products on offer through our specialist business unit, Organically Coated Steels (OCS). Our extensive product offerings include Plastisol Leathergrain, Internal/External Polyesters, Laminates, Colorcoat HPS200 Ultra[®] and Prisma[®], Estetic[®] & Granite[®] HDX, COR-TEN[®] and Aluzinc, Magnelis[®], Zintec and Galvanised Coated Steels.

Used in many industry sectors with a wide range of internal and external applications, our organically and specialist coated steel products bring a variety of benefits:



ENVIRONMENTALLY
FRIENDLY



A1 FIRE RATED



CORROSION
RESISTANT



RANGE OF
FINISHES

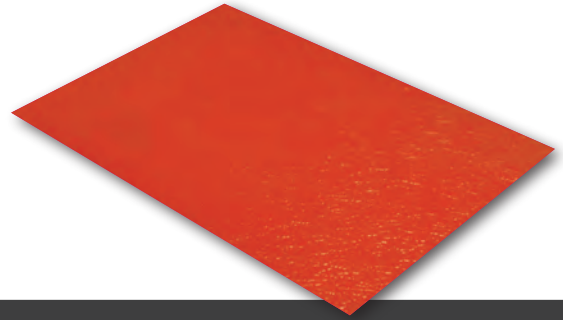
IN-HOUSE PROCESSING CAPABILITIES

From de-coiling, slitting & blanking, we are equipped to support an extensive range of customer demands for material solutions that help not only save time and money but also improve operational efficiency. Our extensive processing capabilities also include tube & flat laser, water jet, profiling, fabrication, bending/forming, sawing & drilling, shot blasting & painting, section bending, routing, and punching & shearing.

PLASTISOL LEATHERGRAIN

Plastisol is a 200-micron PVC paint system on a hot-dipped Galvanised Steel substrate with a leathergrain emboss. The product is available in an extensive range of colours, is extremely versatile and can be utilised in a wide variety of applications.

Gauge: 0.4mm – 1.5mm.



BENEFITS	APPLICATIONS
<ul style="list-style-type: none"> • Excellent corrosion resistance • Excellent abrasion resistance • Internal & external applications • Wide range of ex-stock colours and gauges • Very good formability 	<ul style="list-style-type: none"> • Heating & ventilation • Garage & industrial doors • Portable accommodation • Construction cladding & flashings

LAMINATES

The most common laminated steel products are 'White Foodsafe' laminate and 'Wood Grain-effect' laminate. However, a wide array of coatings are available to suit the colours and specifications of the end application.

Gauge: 0.4mm – 1.2mm.

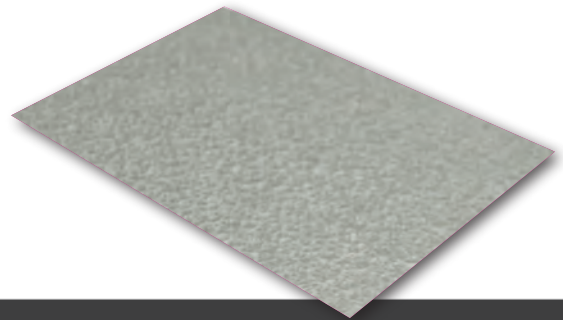


BENEFITS	APPLICATIONS					
<ul style="list-style-type: none"> • Strength of steel with the appearance of wood • Suitable for internal & external applications • Good formability 	<table border="1" style="width: 100%; border-collapse: collapse;"> <thead> <tr> <th style="background-color: #34495e; color: white;">FOODSAFE</th> <th style="background-color: #34495e; color: white;">WOODGRAIN</th> </tr> </thead> <tbody> <tr> <td style="background-color: #d9d9d9;"> <ul style="list-style-type: none"> • Food preparation areas • Hospitals & mortuaries • Clean rooms • Cold stores </td> <td style="background-color: #d9d9d9;"> <ul style="list-style-type: none"> • Garage doors • Roller shutter doors • Display cabinets & shelving • Lifts • Garden sheds </td> </tr> </tbody> </table>	FOODSAFE	WOODGRAIN	<ul style="list-style-type: none"> • Food preparation areas • Hospitals & mortuaries • Clean rooms • Cold stores 	<ul style="list-style-type: none"> • Garage doors • Roller shutter doors • Display cabinets & shelving • Lifts • Garden sheds 	
FOODSAFE	WOODGRAIN					
<ul style="list-style-type: none"> • Food preparation areas • Hospitals & mortuaries • Clean rooms • Cold stores 	<ul style="list-style-type: none"> • Garage doors • Roller shutter doors • Display cabinets & shelving • Lifts • Garden sheds 					

ALUZINC

Aluzinc, Aluminium and Zinc alloy – Aluminium (55%), Zinc (43.4%) and Silicon (1.6%), is a cold-rolled Galvanised Steel. Aluzinc has excellent corrosion resistance in most atmospheric conditions. This is achieved through the combination of sacrificial protection of the Zinc, and the barrier protection of the Aluminium. The product is also known as Zinalume and Galvalume.

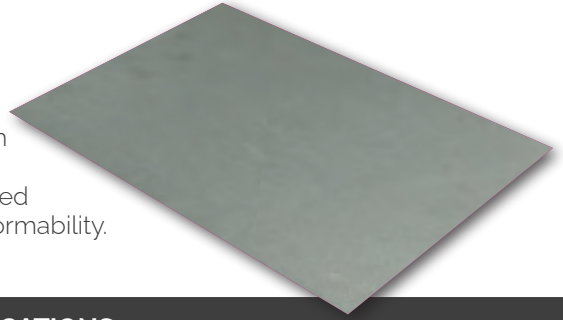
Coating weights: 150g & 185g. Gauge: 0.4mm - 2.0mm.



BENEFITS	APPLICATIONS
<ul style="list-style-type: none"> • Excellent corrosion resistance • Available with 'clear anti-fingerprint sealant' • Up to 20 year-performance warranty • Formable • Weldable • Paintable • RoHS compliant 	<ul style="list-style-type: none"> • Petrochemical industry • Construction, roofing & flashings • Outdoor sheds • Electrical enclosures & computer cabinets • Industrial doors • Fences • Insulation • HVAC units

MAGNELIS®

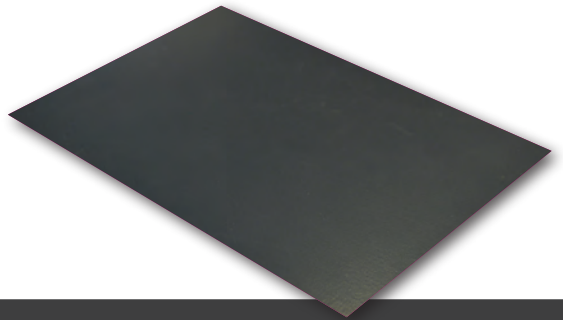
Magnelis® is an alloy composed of Zinc + Aluminium (3.5%) and Magnesium (3%), resulting in a product with excellent corrosion resistance properties. The product protects exposed cut edges with a thin zinc-based protective film with magnesium, which prevents corrosive reactions. Magnelis® has a similar appearance to Galvanised Steel, but is up to 3 times more corrosion resistant and has better formability. Coating weights: 90g – 310g. Gauge: 0.5mm - 6.0mm.



BENEFITS	APPLICATIONS
<ul style="list-style-type: none"> • Excellent corrosion resistance • RoHS compliant • Paintable • Formable • Weldable 	<ul style="list-style-type: none"> • Door manufacturing • Ducting/spiral tubing • Agricultural applications • Steel sheds • Silos • External gutters

GRANITE® HDX

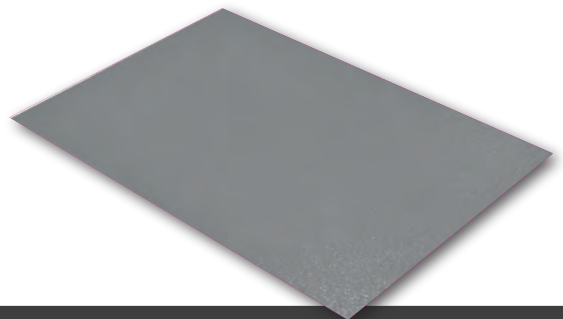
Granite® HDX is a high quality pre-painted steel product ideally suited for buildings where high levels of durability and colour stability are needed in extreme environments. The grained texture gives it an excellent surface hardness for handling and processing. Gauge: 0.4mm – 2.0mm.



BENEFITS	APPLICATIONS
<ul style="list-style-type: none"> • Excellent corrosion resistance • Excellent UV stability • Excellent scratch resistance • Free from heavy metals & hexavalent chromium • RoHS compliant • Excellent formability • Guarantee up to 35 years 	<ul style="list-style-type: none"> • Sandwich panels for roof cladding • Excellent for both internal & external architectural designs • Architectural buildings

ESTETIC® & GRANITE® TEX

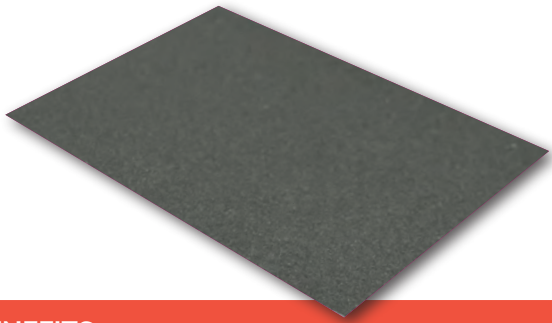
Estetic® Tex (internal) and Granite® Tex (external) are 35 micron textured Polyester coated steel products. The coating formulation provides high aesthetic quality (appearance and gloss) and is developed to meet the requirements of the W.E.E.E. and RoHS European directives. Gauge: 0.4mm – 2.0mm.



BENEFITS	APPLICATIONS
<ul style="list-style-type: none"> • Very good surface hardness • Wide range of colours & gauges • Free from heavy metals & hexavalent chromium • RoHS compliant • Good formability 	<ul style="list-style-type: none"> • Heating & ventilation units • Internal & external architectural applications • Vending machines • Office furniture • Domestic boilers

Trademark References

Magnelis®, Granite® HDX and Estetic® & Granite® Tex are brands belonging to ArcelorMittal.

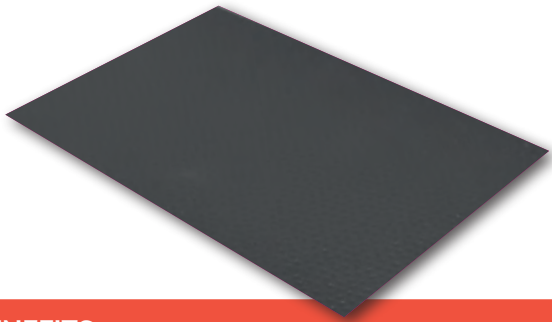


COLORCOAT PRISMA® BY TATA STEEL

The 3-layer Colorcoat Prisma® utilises cutting-edge clear coat technology to provide an optimised pre-finished steel product that offers enhanced aesthetics, long-term performance and durability. Colorcoat Prisma® uses the optimised Galvalloy® metallic coating for ultimate corrosion resistance and cut edge protection.

Gauge: 0.7mm - 1.5mm.

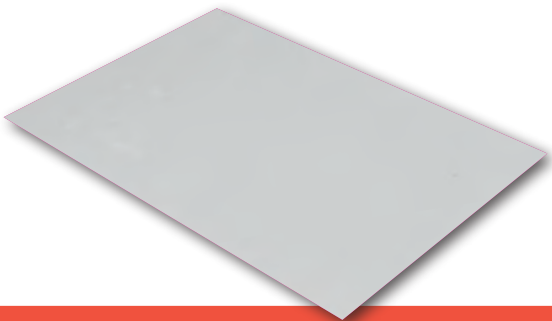
BENEFITS	APPLICATIONS
<ul style="list-style-type: none"> • Revolutionary 3 layer technology providing enhanced aesthetics • Confidex® Guarantee for up to 40 years upon registration • Fully REACH compliant & free of chromates including hexavalent chrome • Made in the UK. Certified to BES 6001 Responsible Sourcing Standard • Reverse side branding making traceability easy 	<ul style="list-style-type: none"> • Rainscreen applications • Roof & wall cladding • Composite panels • Flashings



COLORCOAT HPS200 ULTRA® BY TATA STEEL

Designed to withstand even the most demanding and aggressive environments, Colorcoat HPS200 Ultra® pre-finished steel provides super durability and corrosion resistance. Available with the Confidex® Guarantee for up to 40 years upon registration for the weatherside of industrial and commercial buildings with no inspection or maintenance to maintain its validity. Gauge: 0.5mm - 1.5mm.

BENEFITS	APPLICATIONS
<ul style="list-style-type: none"> • BBA certified for durability in excess of 40 years • Fully REACH compliant & free of chromates including hexavalent chrome • Exceeds requirements of CPI5 as per EN 10169:2010 demonstrating excellent barrier properties when used internally • Made in the UK. Certified to BES 6001 Responsible Sourcing Standard 	<ul style="list-style-type: none"> • Conventional building envelope namely roof & wall cladding • Sectional roller shutter doors • Composite panels • Flashings



COLORCOAT® PE 15 BY TATA STEEL

Colorcoat® PE 15 is a 15µm pre-finished steel for internal applications. It provides an efficient and durable interior product for normal, dry, controlled and unpolluted environments.

Gauge: 0.5mm - 0.7mm.

BENEFITS	APPLICATIONS
<ul style="list-style-type: none"> • Excellent formability • Fully REACH compliant & free of chromates 	<ul style="list-style-type: none"> • Interior roof and wall liner trays • Sandwich panels

Trademark References

Colorcoat Prisma®, Colorcoat HPS200 Ultra®, Colorcoat® PE 15, Confidex® and Galvalloy® are trademarks of Tata Steel.

COR-TEN®

Cor-ten® is a high strength, low alloy, weldable structural steel possessing excellent weathering resistance. It may be used to advantage in painted and unpainted condition. The steel owes its weathering resistance to the formation of a protective oxide coating which seals the surface against itself to give continuity of protection and appearance.

Gauge: 0.8mm - 40mm.

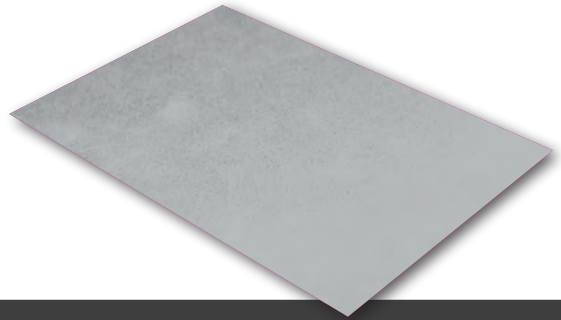


BENEFITS	APPLICATIONS
<ul style="list-style-type: none"> • Develops its own protective film which slows the rate of corrosion • Saves the cost of initial painting & the maintenance costs of repainting • Gives corrosion protection to damaged unpainted areas 	<ul style="list-style-type: none"> • Architectural buildings • Ideal for use in heavy-duty structures • Chimney linings • Log burners

GALVANISED STEEL

Galvanised Steel provides total protection in every millimetre, increasing the prevention of rusting and corrosion. The Zinc coating from the hot dipped galvanising process is smooth and free from imperfections, thus providing complete protection of the underlying Cold Rolled Steel. Hot Dipped Galvanised Steel is generally lower in cost than many other commonly specified protective coatings for steel.

Gauge: 0.5mm - 3.0mm.

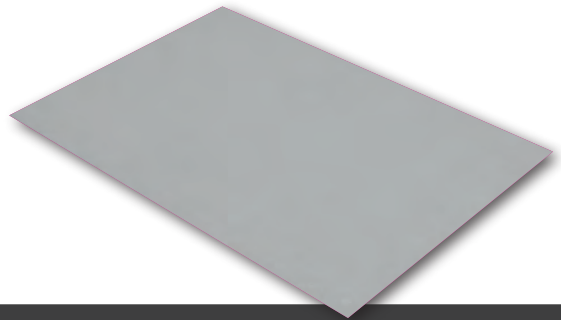


BENEFITS	APPLICATIONS
<ul style="list-style-type: none"> • Superior resistance to abrasion and water due to the hot dipped galvanising process • Available in various forming & structural grades 	<ul style="list-style-type: none"> • Canopies • Ductwork • Sectional roller shutter doors • Planters • Fences • Roofing

ELECTRO ZINC

The uniform surface of the Electro Galvanised Steel sheet offers an excellent substrate for high-quality painting. Electro Zinc also offers excellent weldability.

Gauge: 0.9mm - 3.0mm.



BENEFITS	APPLICATIONS
<ul style="list-style-type: none"> • Excellent corrosion resistance for protecting products in transit, products in storage during the production process & finished products • Perfect choice for powder coating, ensuring long life & an excellent finish • Suitable for industrial & domestic appliances • Excellent weldability due to the uniformity and regularity of the Zinc coating 	<ul style="list-style-type: none"> • Domestic appliances • Electrical cabinets • Air conditioners • Security doors

SUPPLYING CO₂ REDUCED SOLUTIONS

At ASD, we are driven by our passion to contribute to a sustainable future and minimise the impact on our planet. With industries increasingly focused on the procurement of CO₂-reduced materials, we have established a robust supply chain infrastructure that supports the procurement of CO₂-reduced steel and metal products.

Recognising the importance of sustainability, we have taken proactive steps to assist our customers on this journey. Our commitment to delivering environmentally responsible solutions extends across our entire range of products and services, ensuring that we meet customers evolving needs and contribute to global efforts against climate change.





OCS

Hoo Farm Industrial Estate, Edwin Ave, Kidderminster DY11 7RA

t: 01562 821 400 e: ocs@asd.ltd

www.asd.ltd

